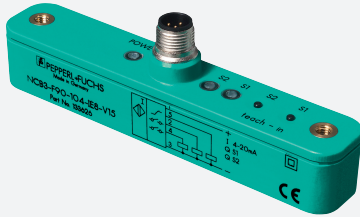


Inductive positioning system

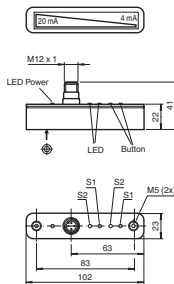
PMI80-F90-IE8-V15



- Analog output 4 mA ... 20 mA
- Adjustable switch points
- Measuring range 0 ... 80 mm



Dimensions



Technical Data

General specifications

Switching element function	Analog current output with PNP binary NO	
Object distance	0.5 ... 3 mm , recommended: 2 mm	
Measurement range	0 ... 80 mm	
Linearity range	1 ... 79 mm	

Nominal ratings

Operating voltage	U_B	18 ... 30 V DC
Reverse polarity protection	reverse polarity protected	
Linearity error	within measuring range: ± 0.8 mm within linearity range: ± 0.4 mm	
Repeat accuracy	R	± 0.1 mm
Resolution	125 μ m	
Temperature drift	± 0.5 mm (-25 °C ... 70 °C)	
No-load supply current	I_0	≤ 40 mA
Operating voltage indicator	LED green	

Release date: 2020-03-23 Date of issue: 2020-10-16 Filename: 191137_eng.pdf

Refer to "General Notes Relating to Pepperl+Fuchs Product Information".

Pepperl+Fuchs Group
www.pepperl-fuchs.com

USA: +1 330 486 0001
fa-info@us.pepperl-fuchs.com

Germany: +49 621 776 1111
fa-info@de.pepperl-fuchs.com

Singapore: +65 6779 9091
fa-info@sg.pepperl-fuchs.com

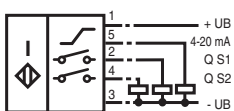
PEPPERL+FUCHS

Technical Data

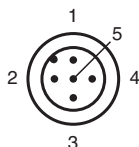
Functional safety related parameters	
MTTF _d	300 a
Mission Time (T _M)	20 a
Diagnostic Coverage (DC)	0 %
Switching output	
Output type	2 switch outputs PNP, NO , reverse polarity protected , short-circuit protected
Operating current	I _L ≤ 100 mA
Switching window	± 1 mm
Switching hysteresis	0.4 mm
Voltage drop	≤ 3 V
Short-circuit protection	pulsing
Analog output	
Output type	1 current output: 4 ... 20 mA
Load resistor	≤ 400 Ω
Compliance with standards and directives	
Standard conformity	
Standards	EN 60947-5-2:2007 IEC 60947-5-2:2007
Approvals and certificates	
UL approval	cULus Listed, General Purpose, Class 2 Power Source
CCC approval	CCC approval / marking not required for products rated ≤36 V
Ambient conditions	
Ambient temperature	-25 ... 70 °C (-13 ... 158 °F)
Mechanical specifications	
Connection type	5-pin, M12 x 1 connector
Degree of protection	IP67
Material	
Housing	ABS
Target	mild steel, e. g. 1.0037, SR235JR (formerly St37-2)

Connection

IE8



Connection Assignment



Release date: 2020-03-23 Date of issue: 2020-10-16 Filename: 191137_eng.pdf

Refer to "General Notes Relating to Pepperl+Fuchs Product Information".

Pepperl+Fuchs Group
www.pepperl-fuchs.com

USA: +1 330 486 0001
fa-info@us.pepperl-fuchs.com

Germany: +49 621 776 1111
fa-info@de.pepperl-fuchs.com

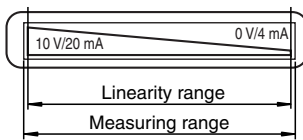
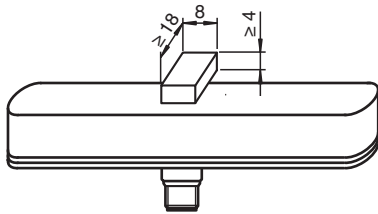
Singapore: +65 6779 9091
fa-info@sg.pepperl-fuchs.com

PF PEPPERL+FUCHS





Wire colors in accordance with EN 60947-5-2

1	BN	(brown)
2	WH	(white)
3	BU	(blue)
4	BK	(black)
5	GY	(gray)

dimensions for the target object:



Accessories


	BT-F90-W	Damping element for sensors of type F90, F112, and F166; side hole
	MH-F90	Mounting bracket for mounting of F90 sensors
	V15-G-2M-PVC	Female cordset, M12, 5-pin, PVC cable
	V15-W-2M-PVC	Female cordset, M12, 5-pin, PVC cable

Release date: 2020-03-23 Date of issue: 2020-10-16 Filename: 191137_eng.pdf

Refer to "General Notes Relating to Pepperl+Fuchs Product Information".

Operation

Operating instructions


- Safety information
 - 
 This product may not be used in applications where personal safety depends on the function of the device.
 This product is not a safety component as described in EU Machinery Directive.

- Sensor versions

The F90 linear position measurement system is available in 2 versions.
 In the PMI...-F90-IU-V1 version, the position measuring system transmits current and voltage signals proportional to the position of the damping element at the outputs.
 The PMI...-F90-IE8-V15 version offers a current signal as well as the option of teaching in two switching points directly at the sensor independently of one another at the press of a button, which is then indicated on two switching outputs. Two additional LEDs indicate the output states of the two switching outputs.

Version PMI...-F90-IU-V1

Output signals: 4 mA ... 20 mA and 0 V ... 10 V

- 
 Only the current output or the voltage output may be used. The unused output must remain load free.

Version PMI...-F90-IE8-V15

Output signals: 4 mA ... 20 mA and 2 programmable switching amplifiers

- Programming the PMI...-F90-IE8-V15


The rear of the PMI...-F90-IE8-V15 sensor has two small, slightly recessed push buttons for programming the switching points. The buttons are marked "teach in" and S1 for switching point S1 and S2 for switching point S2.

To teach in a switching point, proceed as follows:

- The position detection damping element must be placed at the relevant position, i.e. the switching point that you wish to teach in.
- Press the corresponding push button for at least two seconds.
 The associated switching state LED starts flashing to indicate that the sensor is now in "teach mode".
- Press the button again to confirm the relevant switching point.


The switching state LED then lights up constantly as long as the damping element is not moved.

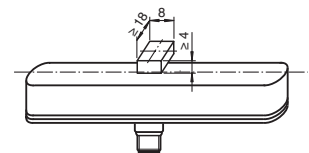
The switching point is now taught in and the associated switching point changes to an active state within an actuator adjustment range of ± 1 mm around the taught switching point.

- 
 If the switching point is not confirmed within 80 seconds, the sensor exits "teach mode" and continues operation with the previous values.

- Damping element

The linear position measurement system is adapted perfectly to the geometry of the damping elements offered in our product range.

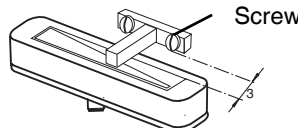
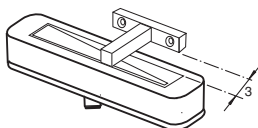
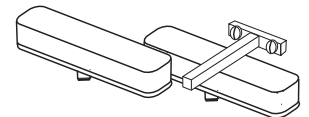
- 
 When using other damping elements, always make sure that the active surface of the damping element has a width of exactly 8 mm and covers the entire width of the sensor.



- Installation and operation

Instructions on installation

- Flush installation is possible
- to extend the measuring range, units from the -F90 linear position measurement system can be connected in series (both behind and adjacent to one another) without a minimum distance.
- The minimum distance between the measuring field (framed area on the sensor front) and mounting base or mounting elements on the damping element must be 3 mm.



- Operating information

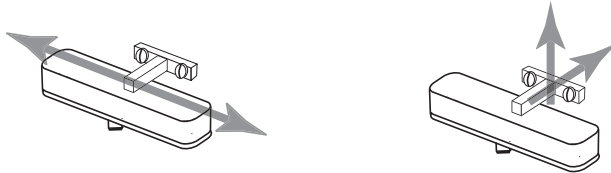
The specified measurement accuracy is achieved with an actuator distance of 1 to 3 mm.

If the damping element leaves the measuring area (illustration below):

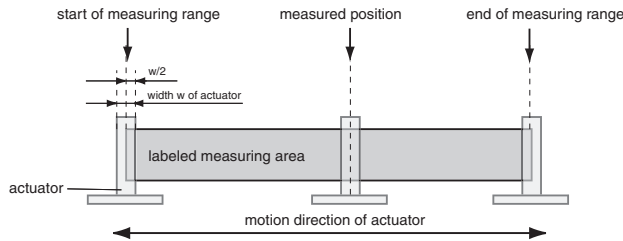
- the last valid value is retained at the voltage output (PMI...-F90-IU-V1 only) until the damping element enters the valid area again.
- the last valid value is retained for 0.5 seconds at the current output (all types). The output then switches to a fault current of 3.6 mA until the damping element enters the valid area again.

Release date: 2020-03-23 Date of issue: 2020-10-16 Filename: 191137_eng.pdf

- the switching amplifiers set to basic state after 0.5 seconds ("normally open").



- Defining the measuring range / measured position
The measured position of the damping element (actuator) is based on half of the width (center of the actuator). The measuring range starts and finishes when half the width of the actuator covers the measurement field marked on the sensor when the actuator makes a longitudinal movement (see left illustration above).



- Accessories

Damping elements
BT-F90-W



Mounting bracket
MH-F90



- Straight cable:**V1-G-2M-PVC (4-wire)
V15-G-2M-PVC (5-wire)
- Angled cable:**V1-W-2M-PVC (4-wire)
V15-W-2M-PVC (5-wire)