

# Retroreflective sensor RLK39-54/31/40a/116

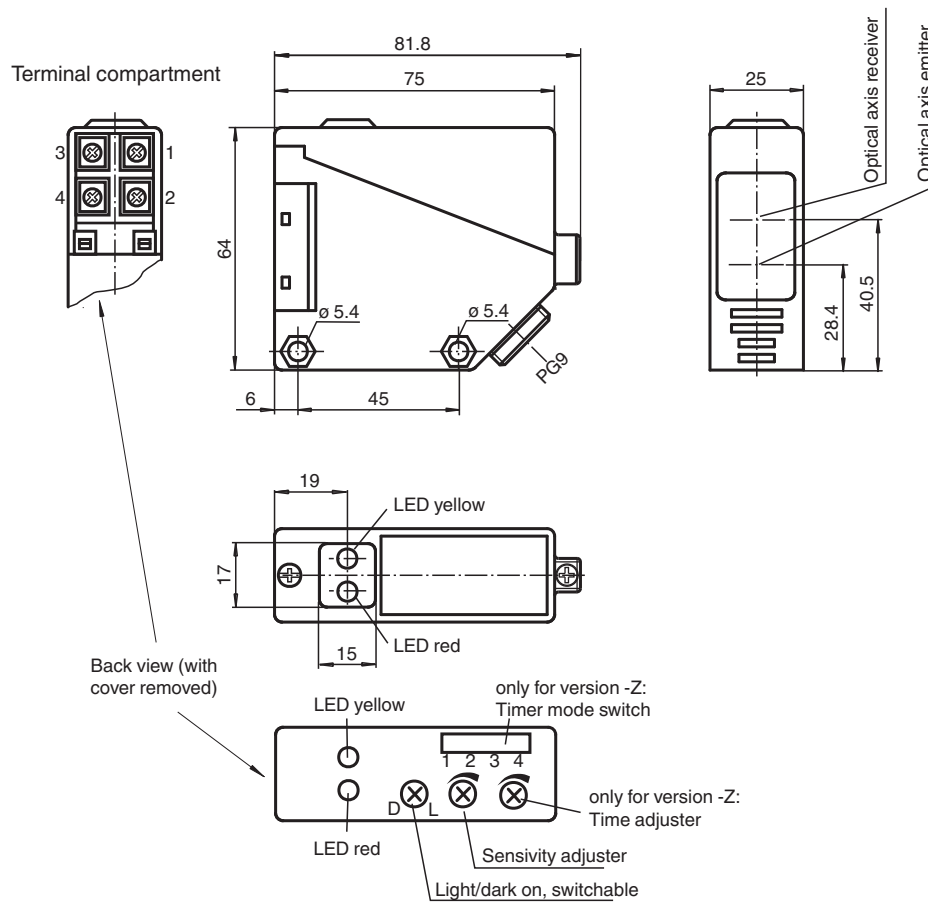


- Glare protected with polarization filter
- Visible red light
- Light-on/dark-on, switchable
- Degree of protection IP67

Retroreflective sensor for standard applications, polarization filter, detection range 7 m, red light, sensitivity adjuster, light/dark on, relay contact output, terminal compartment



## Dimensions



Release date: 2023-04-04 Date of issue: 2023-04-04 Filename: 088822\_eng.pdf

Refer to "General Notes Relating to Pepperl+Fuchs Product Information".

Pepperl+Fuchs Group  
www.pepperl-fuchs.com

USA: +1 330 486 0001  
fa-info@us.pepperl-fuchs.com

Germany: +49 621 776 1111  
fa-info@de.pepperl-fuchs.com

Singapore: +65 6779 9091  
fa-info@sg.pepperl-fuchs.com

**PF** PEPPERL+FUCHS

## Technical Data

General specifications			
Effective detection range			0 ... 5 m
Reflector distance			0.1 ... 5 m
Threshold detection range			6 m
Reference target			H50 reflector
Light source			LED red
Light type			modulated visible red light
Polarization filter			yes
Ambient light limit			IEC / EN 60947-5-2 , 10000 Lux
Functional safety related parameters			
MTTF <sub>d</sub>			803 a
Mission Time (T <sub>M</sub> )			20 a
Diagnostic Coverage (DC)			0 %
Indicators/operating means			
Function indicator			LED yellow: switching state LED red: pre-fault indication
Control elements			Sensing range adjuster, light-on/dark-on changeover switch
Electrical specifications			
Operating voltage	U <sub>B</sub>		12 ... 240 V DC 24 ... 240 V AC (50 ... 60 Hz)
Ripple			10 %
No-load supply current	I <sub>0</sub>		≤ 50 mA
Protection class			II, rated voltage ≤ 250 V AC with pollution degree 1-2 according to IEC 60664-1 Caution! The protection class 2 is only valid when the terminal compartment is closed. output circuit has basic insulation to control circuit according to IEC/EN 61140
Power consumption	P <sub>0</sub>		≤ 3 VA
Time delay before availability	t <sub>v</sub>		≤ 300 ms
Output			
Switching type			light/dark on
Signal output			1 relay output
Switching voltage			max. 240 V AC ; 150 V DC
Switching current			max. 3 A
Switching power			DC: max. 90 W AC: max. 750 VA
Switching frequency	f		≤ 25 Hz
Response time			≤ 20 ms
Conformity			
Product standard			EN 60947-5-2
Approvals and certificates			
CCC approval			Certified by China Compulsory Certification (CCC)
Approvals			CE
Ambient conditions			
Ambient temperature			-25 ... 55 °C (-13 ... 131 °F)
Storage temperature			-40 ... 70 °C (-40 ... 158 °F)
Mechanical specifications			
Housing width			25 mm
Housing height			64 mm
Housing depth			75 mm
Degree of protection			IP67
Connection			terminal compartment PG9, ≤ 2.5 mm <sup>2</sup>
Material			
Housing			PBT
Optical face			PMMA
Mass			approx. 110 g
General information			

Release date: 2023-04-04 Date of issue: 2023-04-04 Filename: 088822\_eng.pdf

Refer to "General Notes Relating to Pepperl+Fuchs Product Information".

 Pepperl+Fuchs Group  
www.pepperl-fuchs.com

 USA: +1 330 486 0001  
fa-info@us.pepperl-fuchs.com

 Germany: +49 621 776 1111  
fa-info@de.pepperl-fuchs.com

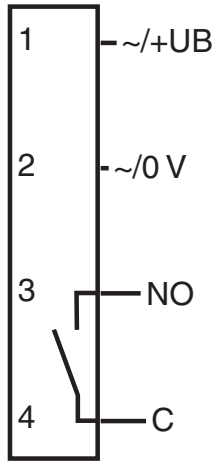
 Singapore: +65 6779 9091  
fa-info@sg.pepperl-fuchs.com

 PEPPERL+FUCHS

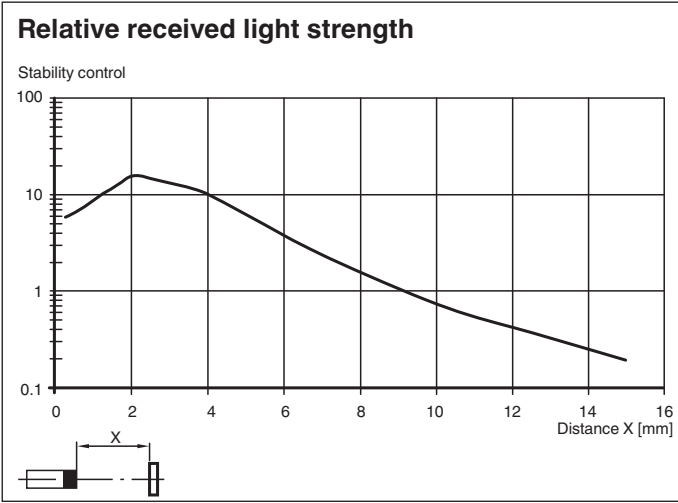
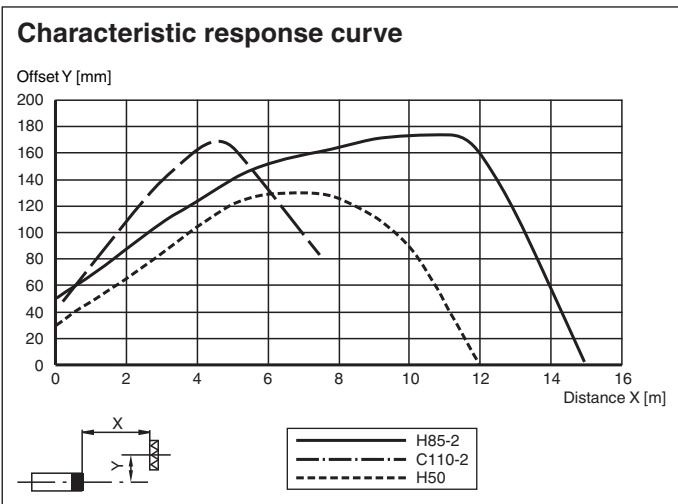
**Technical Data**

Scope of delivery	Mounting aid , Reflector
-------------------	--------------------------

**Connection Assignment**




**Characteristic Curve**



Release date: 2023-04-04 Date of issue: 2023-04-04 Filename: 088822\_eng.pdf

Refer to "General Notes Relating to Pepperl+Fuchs Product Information".

## Accessories

	<b>OMH-RL39</b>	Mounting bracket for RL39 series Sensors
---	-----------------	--

Release date: 2023-04-04 Date of issue: 2023-04-04 Filename: 088822\_eng.pdf

Refer to "General Notes Relating to Pepperl+Fuchs Product Information".

Pepperl+Fuchs Group  
www.pepperl-fuchs.com

USA: +1 330 486 0001  
fa-info@us.pepperl-fuchs.com

Germany: +49 621 776 1111  
fa-info@de.pepperl-fuchs.com

Singapore: +65 6779 9091  
fa-info@sg.pepperl-fuchs.com