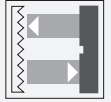


Retroreflective sensor

RLK39-55-Z/31/35/40a/116

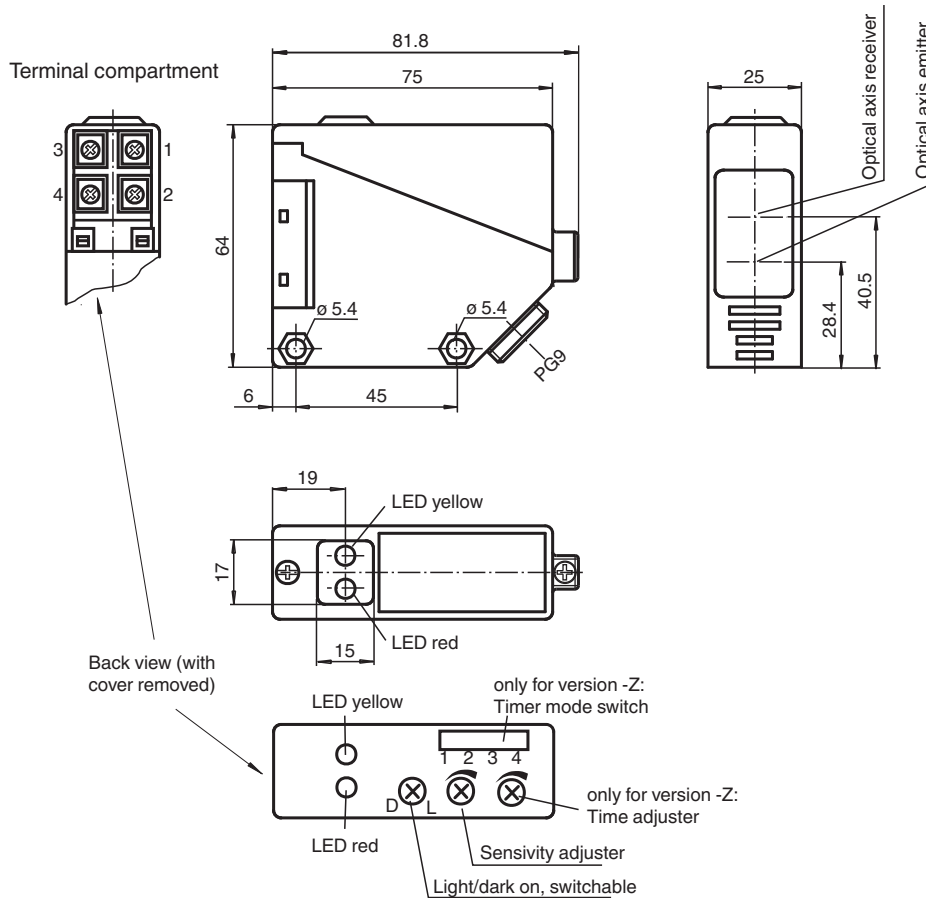


- Visible red light
- Light-on/dark-on, switchable
- Timer function
- Degree of protection IP67

Retroreflective sensor without polarization filter



Dimensions



Release date: 2020-12-10 Date of issue: 2020-12-10 Filename: 088815_eng.pdf

Refer to "General Notes Relating to Pepperl+Fuchs Product Information".

Pepperl+Fuchs Group
www.pepperl-fuchs.com

USA: +1 330 486 0001
fa-info@us.pepperl-fuchs.com

Germany: +49 621 776 1111
fa-info@de.pepperl-fuchs.com

Singapore: +65 6779 9091
fa-info@sg.pepperl-fuchs.com

PF PEPPERL+FUCHS

Technical Data

General specifications		
Effective detection range		0 ... 17 m
Reflector distance		0.1 ... 17 m
Threshold detection range		20 m
Reference target		H50 reflector
Light source		LED red
Light type		modulated visible red light
Polarization filter		no
Ambient light limit		IEC / EN 60947-5-2 , 10000 Lux
Functional safety related parameters		
MTTF _d		803 a
Mission Time (T _M)		20 a
Diagnostic Coverage (DC)		0 %
Indicators/operating means		
Function indicator		LED yellow: switching state LED red: pre-fault indication
Control elements		Sensing range adjuster, light-on/dark-on changeover switch
Control elements		switch for timer function
Electrical specifications		
Operating voltage	U _B	12 ... 240 V DC 24 ... 240 V AC (50 ... 60 Hz)
Ripple		10 %
No-load supply current	I ₀	≤ 50 mA
Protection class		II, rated voltage ≤ 250 V AC with pollution degree 1-2 according to IEC 60664-1 Caution! The protection class 2 is only valid when the terminal compartment is closed. output circuit has basic insulation to control circuit according to IEC/EN 61140
Power consumption	P ₀	≤ 3 VA
Time delay before availability	t _v	≤ 300 ms
Output		
Switching type		light/dark on
Signal output		1 relay output
Switching voltage		max. 240 V AC ; 150 V DC
Switching current		max. 3 A
Switching power		DC: max. 90 W AC: max. 750 VA
Switching frequency	f	≤ 25 Hz
Response time		≤ 20 ms
Timer function		On-/off-delay or pulse extension on choice
Conformity		
Product standard		EN 60947-5-2
Approvals and certificates		
EAC conformity		TR CU 020/2011 TR CU 004/2011
CCC approval		Certified by China Compulsory Certification (CCC)
Approvals		CE
Ambient conditions		
Ambient temperature		-25 ... 55 °C (-13 ... 131 °F)
Storage temperature		-40 ... 70 °C (-40 ... 158 °F)
Mechanical specifications		
Housing width		25 mm
Housing height		64 mm
Housing depth		75 mm
Degree of protection		IP67
Connection		terminal compartment PG9, ≤ 2.5 mm ²
Material		

Release date: 2020-12-10 Date of issue: 2020-12-10 Filename: 088815_eng.pdf

Refer to "General Notes Relating to Pepperl+Fuchs Product Information".

Pepperl+Fuchs Group
www.pepperl-fuchs.com

USA: +1 330 486 0001
fa-info@us.pepperl-fuchs.com

Germany: +49 621 776 1111
fa-info@de.pepperl-fuchs.com

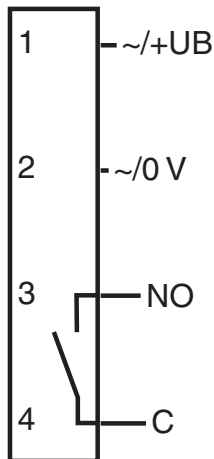
Singapore: +65 6779 9091
fa-info@sg.pepperl-fuchs.com

 PEPPERL+FUCHS

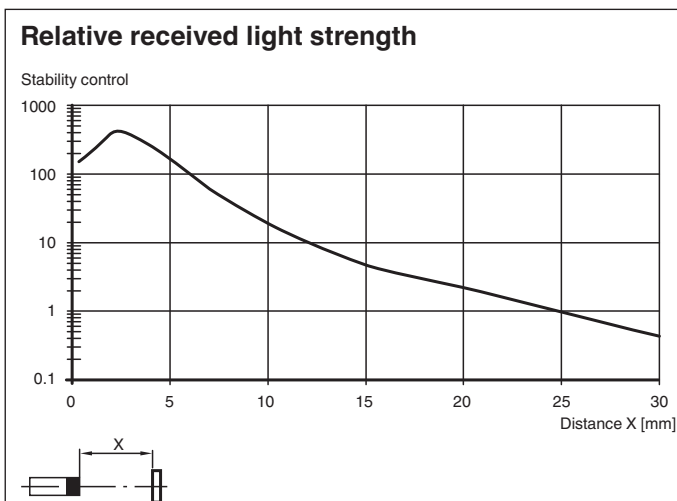
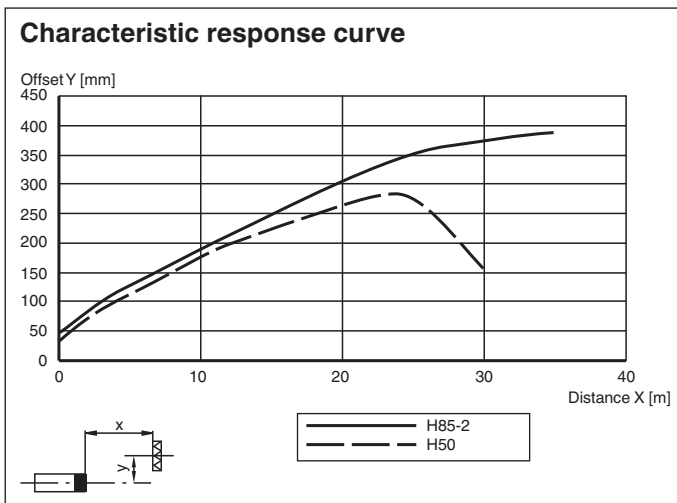
Technical Data

Housing	PBT
Optical face	PMMA
Mass	approx. 110 g
General information	
Scope of delivery	Mounting aid , Reflector

Connection Assignment



Characteristic Curve



Release date: 2020-12-10 Date of issue: 2020-12-10 Filename: 088815_eng.pdf

Refer to "General Notes Relating to Pepperl+Fuchs Product Information".

Mounting

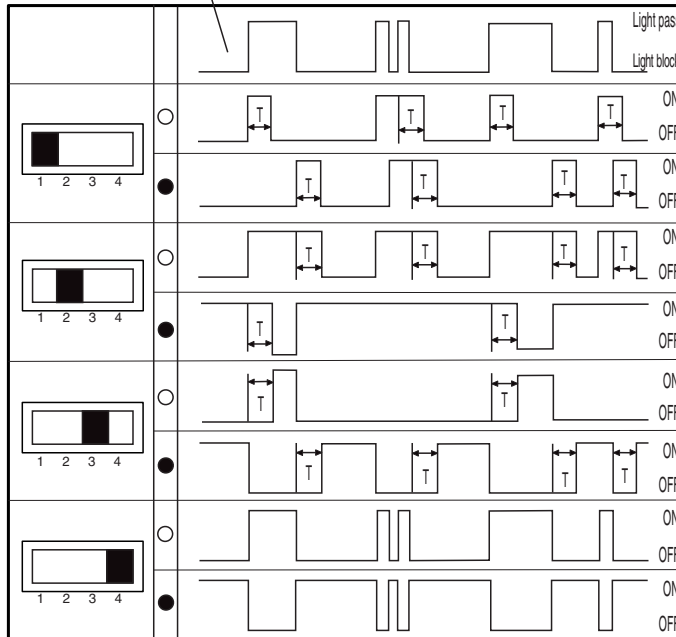
Timerfunktion Fonction de temporisation Funzione timer

Timer function Función del timer

Zeitgeber Modus
Timer Mode
Mode temporisation
Modo Temporizador
Modo di controllo di tono

Lichtstrahl, light beam, faisceau lumineux,
barrera de luz, raggio di luce

Impulsausgang
One shot
Sortie impulsions
Salida de impulso
Uscita d'impulsi

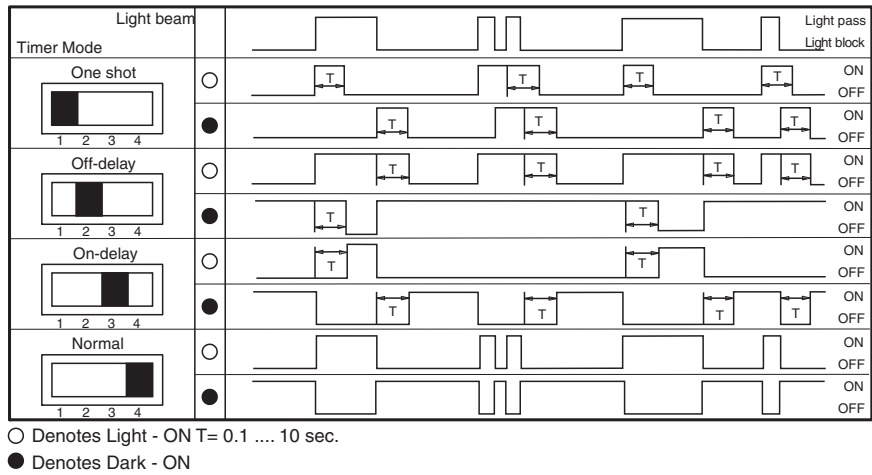


- Kennzeichnung der Hell-Schaltung (T= 0,1 s bis 10 s).
Denotes Light-ON (T= 0.1 s ... 10 s).
Sensibilité à la lumière (T= 0,1 s ... 10 s).
Indicación conmut. claro (T= 0,1 s ... 10 s).
Commutazione in presenza di luce (T= 0,1 s ... 10 s).
- Kennzeichnung der Dunkel-Schaltung
Denotes Dark-ON
Sensibilité à l'obscurité
Indicación conmut. oscuro
Commutazione per assenza di luce

Accessories

	OMH-RL39	Mounting bracket for RL39 series Sensors
--	-----------------	--

Configuration



Accessories

Other suitable accessories can be found at www.pepperl-fuchs.com

Release date: 2020-12-10 Date of issue: 2020-12-10 Filename: 088815_eng.pdf